

IFR/VFR Charts Data Alert

TO: Users of all Garmin aviation products and Garmin Pilot™ using the Europe IFR/VFR, Europe VFR, Central Europe VFR, Central Europe excluding Germany VFR, and France-Full Coverage (DFS) databases

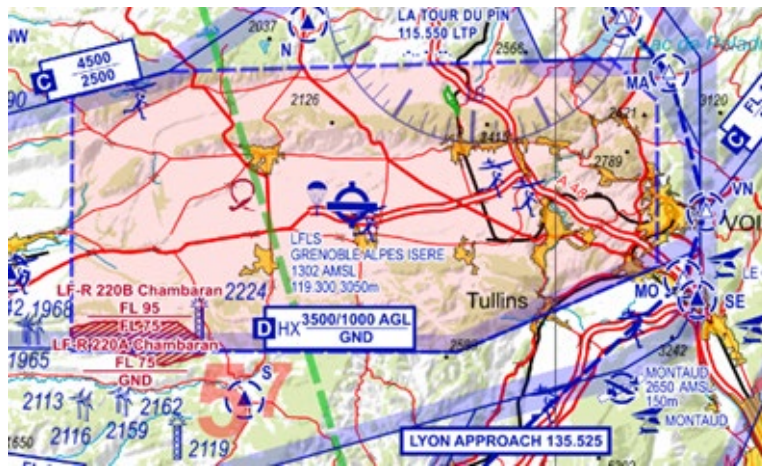
DATE: June 12, 2024

CYCLE: 2406

SUBJECT: DFS V500 France SE – Incorrect vertical limit of CTR Grenoble

DESCRIPTION

The vertical limit of CTR Grenoble is incorrect on the 2024 version of the V500 France SE chart. The vertical limit should appear as below:



PILOT ACTION

Exercise caution when referencing the V500 France SE chart near Grenoble for cycle 2406.

Alerts are written for the currently effective cycle and next cycle. It is possible that data from prior cycles is also affected. Garmin recommends using the latest effective data cycle.

RESOLUTION

The corrected V500 France SE chart will be included in cycle 2407 of the Europe IFR/VFR, Europe VFR, Central Europe VFR, Central Europe excluding Germany VFR, and the DFS V500 France SE Charts database for applicable Garmin aviation products and in Garmin Pilot. Cycle 2407 IFR/VFR Charts databases are effective July 11, 2024 and will be available July 10, 2024.

THIS ALERT SHOULD BE MADE AVAILABLE TO ALL USERS OF GARMIN AVIATION UNITS OR SYSTEMS UTILIZING AN APPLICABLE IFR/VFR CHARTS DATABASE

Garmin requests that the flight crew report any observed discrepancies related to database information. These discrepancies could come in the form of an incorrect procedure, incorrectly identified terrain, obstacles, fixes, or any other displayed item used for navigation or communication in the air or on the ground. Go to fly.garmin.com and select "[Aviation Data Error Report](#)."